



Known for Reliability Since 1921

The PRO-9 Series machines are merchandising centers and offer great versatility. Use the Standard Tenderizer Cradle assembly to tenderize and knit beef products. The Strip Cutting assembly is used for strip cutting beef and chicken stir-fry products, or for fajitas and julienne for salads, beef jerky strips, and beef cubing for kabobs and stews. The Star Roller assembly can punch 1/8" lasting holes in beef patties to make the beef more tender and reduce cooking time up to 40%.

Use multiple surface Scoring Rollers to enhance eye-appealing beef patties. Use the specially designed Cutlet Tenderizer Roller assembly to enhance the texture and tenderness of veal, chicken breasts, or squid by gently piercing the product without tearing. The PRO-9 Series machines help merchandise product by adding value to less expensive, less desirable, and less tender products, thereby enhancing your profit margin.

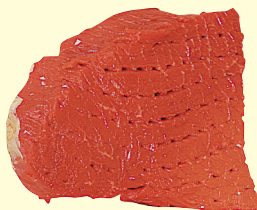


Model PRO-9SD 1/2HP
Model PRO-9HD 1/2HP
Model PRO-9HD 3/4HP

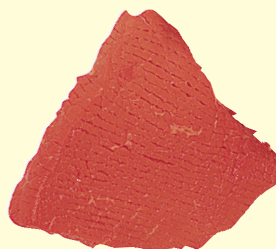
PRO-9 Series



Standard Cube Steak
Tenderizing/Knitting



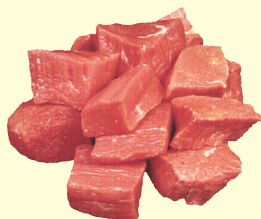
Beef Steak
Star Punching



Beef Cutlet
Tenderizing



Beef Steak
Scoring



Beef Kabobs



Beef Strips



Chicken Stir Fry

SPECIFICATIONS

MODELS	Pro-9SD 1/2HP	Pro-9HD 1/2HP	Pro-9HD 3/4HP
Electrical Supply	5' (1524mm) 3 wire, power cord on 115v with 3 prong ground plug • on 220V cord supplied less plug		
Construction	Stainless steel case, case top • lexan transparent safety feed cover • coated steel frame		
Safety Switch	Motor shuts down when safety feed cover is raised		
Transmission Drive	Poly flex double v-belt		
Transmission Aluminum, Oil bath	Bronze sleeve bearings • fiber drive gear	Ball bearings • steel gears	
Roller Speeds	105 R.P.M. Standard	115 R.P.M. Standard 140 R.P.M. Optional- No Cost	
Certifications	N.S.F. • U.S.D.A. • U.L. • C.S.A.(115v-60hz) • C.F.I.A.		
Standard Features	TA3130 Dual purpose tenderizing/knitting assembly • operating and safety manual		
Options	Heavy duty rigid S.S. combs • stainless steel safety cover • cradle storage box		
Weights:	Approximate - depending on options		
Pro-9 unpacked	69lbs. (31kg)	70lbs. (32kg)	73lbs. (33.1kg)
Pro-9 packed	76lbs. (34kg)	78lbs. (35kg)	80lbs. (36kg)
Dimensions packed	L = 20" (508mm) x W = 19" (483mm) x H = 21" (533.4mm)		

Motors:							
HP	KW	TYPE	VOLTS	AMPS	CYCLE	PH	STATUS
1/2SD	.38	GP/DP	115/230	6.6/3.3	60	1	STD
1/2HD	.38	GP/DP	115/230	6.6/3.3	60	1	STD
3/4HD	.56	GP/DP	115/230	8.4/4.2	60	1	STD
1/2SD	.38	GP/DP	115/230	8.4/4.2	50	1	EC
1/2HD	.38	GP/DP	115/230	8.4/4.2	50	1	EC
3/4HD	.56	GP/DP	115/230	13.6/6.8	50	1	EC

DP = Drip Proof EC = Extra Cost GP = General Purpose HD = Heavy Duty
HP = Horsepower SD = Standard Duty STD = Standard

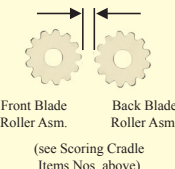
Standard and Optional Cutting Cradle Assemblies						
Item No.	DESCRIPTIONS Dimensions in inches/mm	Cover TYPE	Pro-9SD 1/2HP	Pro-9HD 1/2HP	Pro-9HD 3/4HP	
TA3130	Std. (tenderizing) cradle	L	STD	STD	STD	
TA3130-50	Cutlet (tenderizing) cradle	SS	EC	EC	EC	
TA3130-9A	1/4"/6.3 Stew-strip cradle	L	NA	EC	EC	
TA3130-5A	3/8"/9.5 Stew-strip cradle	L	NA	EC	EC	
TA3130-4A	9/16"/14.3 Stew-strip cradle	L	EC	EC	EC	
TA3130-1A	3/4"/19.1 Stew-strip cradle	L	EC	EC	EC	
TA3130-14A	7/8"/22.2 Stew-strip cradle	L	EC	EC	EC	
TA3130-2A	1"/25.4 Stew-strip cradle	L	EC	EC	EC	
TA3130-3A	1-1/4"/31.7 Stew-strip cradle	L	EC	EC	EC	
TA3130-7A	1-9/16"/39.7 Stew-strip cradle	L	EC	EC	EC	
TA3130-8A	2"/50.8 Stew-strip cradle	L	EC	EC	EC	
TA3130-36	Star blade roller cradle	L	EC	EC	EC	
TA3130-20	Scoring cradle, 0" roller gap	L	EC	EC	EC	
TA3130-21	Scoring cradle, 1/16"/1.6 roller gap	L	EC	EC	EC	
TA3130-22	Scoring cradle, 1/8"/3.2 roller gap	L	EC	EC	EC	
TA3130-23	Scoring cradle, 3/16"/4.8 roller gap	L	EC	EC	EC	
TA3130-24	Scoring cradle, 1/4"/6.4 roller gap	L	EC	EC	EC	

EC = Extra Cost L = Lexan NA = Not Available SS = Stainless Steel STD = Standard

Scoring Cradle Blade Assemblies				
Product Type	Patty Thickness	Recommend Blade Roller Assembly combination for 1/16" Depth of scoring on each side of patty (dimensions in inches/mm)		
		Front Blade Diameter	Back Blade Diameter	"A" Gap Dimensions
Soft	1/8"-1/4"/3.2-6.4	2"/50.8	2"/50.8	0
	1/4"-1/2"/6.4-12.7	2"/50.8	1-7/8"/47.6	1/16"/1.6
Frozen	1/4"/6.4	1-7/8"/47.6	1-7/8"/47.6	1/8"/3.2
	5/16"/7.9	1-7/8"/47.6	1-3/4"/44.5	3/16"/4.3
	3/8"/9.5	1-3/4"/44.5	1-3/4"/44.5	1/4"/6.3

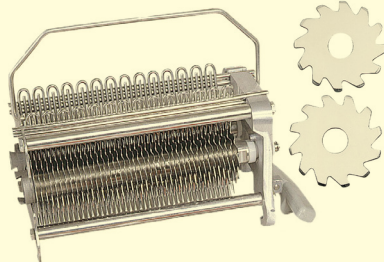
NOTE: If deeper scoring is desired, use the next larger dia. blade roller combination than recommended.

"A" Gap dimension (space between tips of roller blades)



Front Blade Roller Asm. Back Blade Roller Asm.

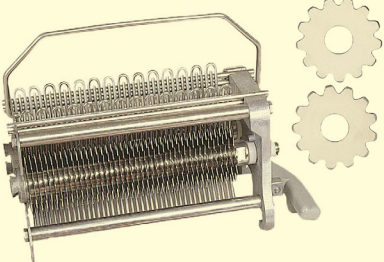
(see Scoring Cradle Items Nos. above)



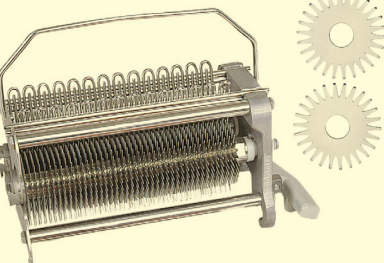
The Standard Tenderizer Blade Tips cut deep (1020 times per revolution) into the product to sever sinew and fiber. Turn your tenderizer into a Knitting machine by changing the position of the rear stripper and feed 2-3 smaller pieces of hard-to-merchandise pieces to form one value-added knitted steak.



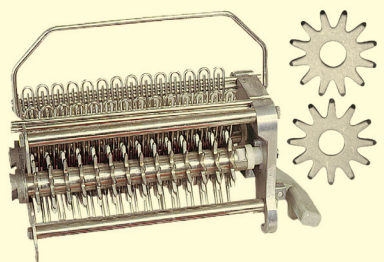
The multi-functional Stew-Strip Cutting Cradle assembly can cut jerky strips, and chicken stir fry for salads. Two passes makes cubes for stew and soups adding value to your products. See chart for selection of nine (9) strip cutting widths.



Select from five (5) Scoring Roller Blade cradle assemblies from the Guide chart below to score steaks or patties to create eye appealing, faster cooking products.

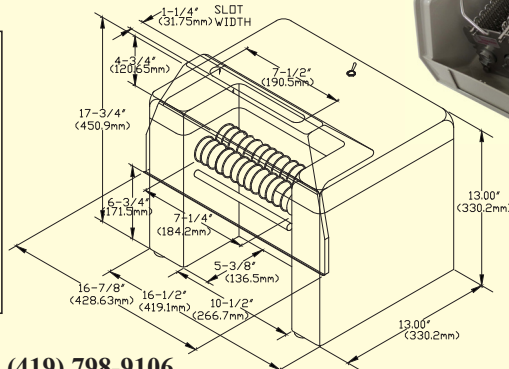


Cutlet Tenderizer Blade Cradle assembly designed for delicate products (chicken breast, veal, squid) by piercing 2125 product pierces per revolution, adding to your value-added product mix (veal scallopini and veal parmesan).



Star Blade Cradle assembly punches 1/8" holes into meat patties or less desirable steaks to break down fiber, reducing cooking time up to 40%, adding value that contributes to your margin.

Optional Cradle Asm.
Storage Box
T3130-S



BIRO MANUFACTURING COMPANY

1114 WEST MAIN STREET

MARBLEHEAD, OH 43440-2099 U.S.A.

All specifications contained herein are subject to change without notification.

Phone: (419) 798-4451 Fax: (419) 798-9106

http://www.birosaw.com sales@birosaw.com

ITEM NO.: LIT-PRO9-131

FORM NO.: MD-PRO-SRS-131-4-19-37 B

Service is available from locations worldwide